



Catalogue

Lux Eterna

Our Non Human Psyche

19 Nov - 12 Dec 2020

Stanley Street gallery
SYDNEY

Exhibition Essay

Ben Bazevski

Exploring the edge of a forest, we are called further into its cradle of trees and rocks. How do they receive us? How do they relate with us? What do they tell us?

If only we could hear their primordial hum, no longer familiar and forgotten.

Consider the immensity and expanse of time, speaking through and to our ancient biology while exploring the purity of nature, our own receptivity to it, and the subtle frequencies when we visit those slow and still silent places.

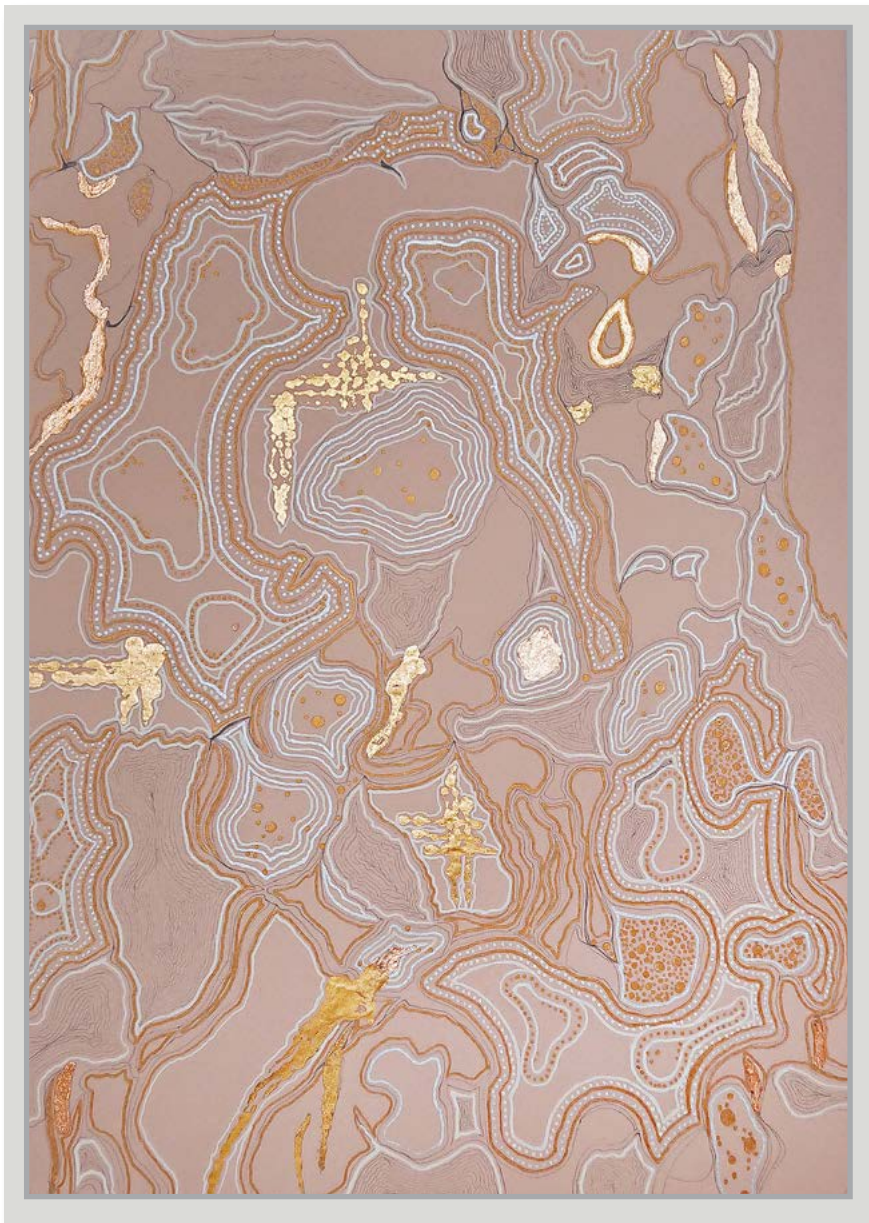
Our Non-human Psyche is a stunning visual attempt to decentralise the human in our collective narrative – in her collection of finely intricate ink drawings of trees, moss, stones and dry lakes, Lux Eterna invites us to appreciate the overwhelming truth of what we're not really seeing, what we don't make time to see, feel and experience. The meditative quality of Lux's works, are evidenced in repetitive minute details, which tune into and are emblematic of cellular frequencies deep within our non-human kin. Re-instilling a reverence towards these ancient living beings so close to us, in us, perhaps that we can begin to ordain our spirituality in this reality.

We are confronted to consider all that glitters is not gold, where Lux delicately hand foils her works with gold and copper. Recalibrating the place from where we dig out riches, perhaps to where a mirror could be; this new metallic anatomy shifts our focus from the ground and to our non-human kin, also seeing ourselves reflected back in them.

These exquisitely ink laced and gold laden vignettes supplant the royalty, religion and pageantry of humankind's first iconographic art and ritualistic subversions for order out of perceived chaos.

Lux's show guides us through a space that beckons us to re-kindle our relationship to our prehistoric botanical ancestors and their transformative powers of adaptation, of becoming still, more sensitive and more aware in the face of ecological adversity.

Ben Bazevski - Writer, Editor and 2020 Winner of International Geist Poetry Contest



Enquire

Lux Eterna
Lacebark Elm I
2020
Ink, Foil on Paper
21x29cm
\$1,500



Enquire

Lux Eterna
Lacebark Elm II
2020
Ink, Foil on Paper
21x29cm
\$1,500



Enquire

Lux Eterna
Lightning Ridge
2020
Ink, Foil on Paper
21x29cm
\$1,500



Enquire

Lux Eterna
Lake Eyre
2020
Pigment ink & copper foil on paper
70x50cm
\$4,000



Lux Eterna

Birch Tree Study II (Moss)

2020

Pigment Ink, Gold Leaf and Foil on Paper

50 x 65cm

\$3,500

Enquire



Enquire

Lux Eterna
Birch Tree Study III
2020
Ink Gold Leaf Foil on Paper
50 x 65cm
NFS



Enquire

Lux Eterna
Birch Tree Study I
2018
Ink Gold Leaf, Foil on Paper
50 X 65 cm
\$4,000



Enquire

Lux Eterna
Birch Tree Study IV
2018
Pigment Ink, Gold foil on paper
30 x 42cm
\$1,500



Enquire

Lux Eterna
Stone Amphibian III
2017
Pigment Ink & Gold Foil on
Paper
21 x 29cm
\$650



Enquire

Lux Eterna
Stone Amphibian II
2017
Pigment Ink and Copper Leaf
on Paper
30 x 42 cm
\$880



Enquire

Lux Eterna
Stone Amphibian I
2017
Pigment Ink and Gold Foil on
Paper
30 x 42 cm
\$880

Lux Eterna's solo-exhibition at Stanley Street Gallery is a meditation on the expansive and intricate magnificence of the natural world.

In this exhibition of 2D works, Lux Eterna creates a series of ink drawn and hand foiled works on paper, which are amplifications of her personal meditative and embodied experiences when immersed in vast expanses or intimate pockets of landscapes respectively. Her detailed and delicate ink work, points at the immensity of Earth's time-scale, making obvious a slow, gentle and granular being materialised on paper. These meditatively minute markings communicate a long duration wherein the artist is able to recapture the subtle resonances she assimilates in situ. In acknowledging such cellular-like detail, her works invite us to consider the magnitude and gracious endurance of our non-human world, before we spawned and long after we go.

Lux Eterna's practice focuses on encouraging post and trans-human futures that are augmented by sensitivity, imagination and the embodied gaze. Lux asks questions around human subordination to technology without deeper understanding of our bodies. Her collaborative work investigates decolonisation as community dialogue and co-divining un-settling practices, for the scribing of more inclusive and non-colonial futures. Lux is also further researching around how we may re-author language, for a more relational reciprocity with our non-human world.

Lux Eterna

Our Non Human Psyche

19 Nov - 12 Dec 2020

Thurs & Fri - 11am - 6pm
Sat - 11am - 5pm

If our opening hours don't suit you
please phone or email to arrange
a private viewing

Stanley Street gallery
SYDNEY

1/52-54 Stanley Street, Darlinghurst NSW 2010
P: 02 93681142 E: mail@stanleystreetgallery.com.au
W: stanleystreetgallery.com.au